



QUICKIE[®]
Live without limits.

QUICKIE LIFE

IT'S YOUR LIFE

The start of another busy day. The possibilities are endless.
So what are you waiting for?

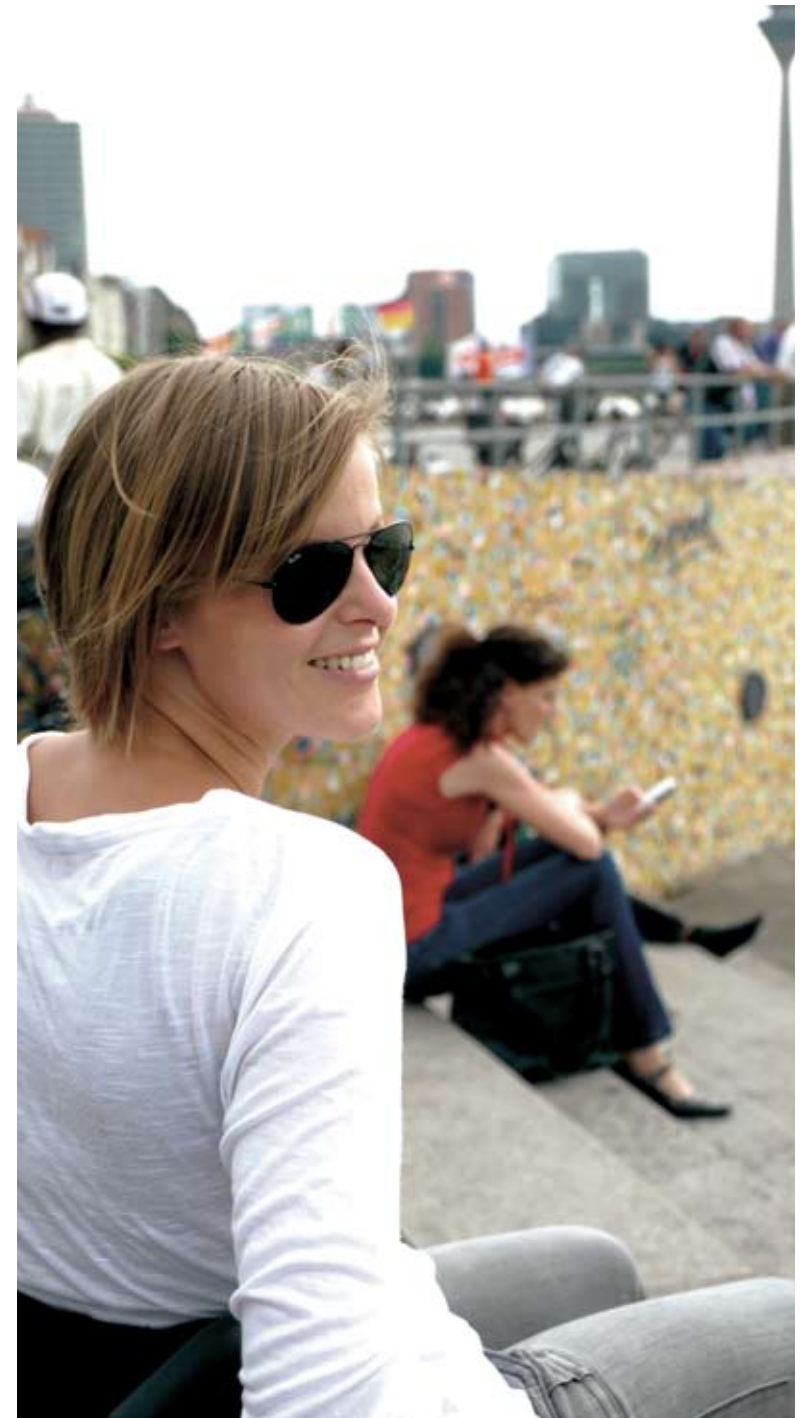


TAKE CONTROL WITH THE QUICKIE LIFE

Fixed front version



When you lead an active life, you need a chair that you can rely on. Quickie Life combines a quality, lightweight build with a stylish design. Perfect for those who don't want to compromise.



HAVE YOU FOUND YOUR WORK/LIFE BALANCE?

Whether it's spending time with friends and family, or pushing yourself to achieve new goals – make the most of your free time with your Quickie Life.





Quickie Life can be adjusted and configured to suit you and your lifestyle.

Choose between a fixed front lightweight frame for a more active look and feel, or the swing-away version if you want to make it even easier to fold and transport.

**EXPLORE YOUR WORLD.
ACHIEVE YOUR AMBITIONS.
TAKE CONTROL.
LIVE WITHOUT LIMITS.**



Fixed front version



Swing-away version

QUICKIE LIFE



Life is for living. Quickie Life has been designed to meet the demands of modern life. Flexible, lightweight and stylish - it won't hold you back.

With full adjustability and configurability, the Quickie Life is perfect for those with an active lifestyle.

But why stop there? Select from a wide range of options, including armrests, sideguards, footrests and brakes, to customise your Quickie Life.



3 arm cross brace system
Provides strength with reduced weight and clean look



Seat height adjustable in 7 positions
With a camber from 0°-4°. Axle plate available in 3 anodized colours (orange, black and silver)



Simple and quick to adjust fork angle
With increased angle range to ensure optimal driving performance



Backrest angle adjustment (optional)
Lightweight and simple to adjust. Provides 18° angle adjustment, from -9° to +9° in 3° increments



Swing-away version

The Quickie Life is also available with swing-away hangers for an easy transfer and compact folding.

Offered in 3 frame lengths, with standard or active hangers both in 70° and 80°



Divided aluminium footrest
Angle and depth adjustable



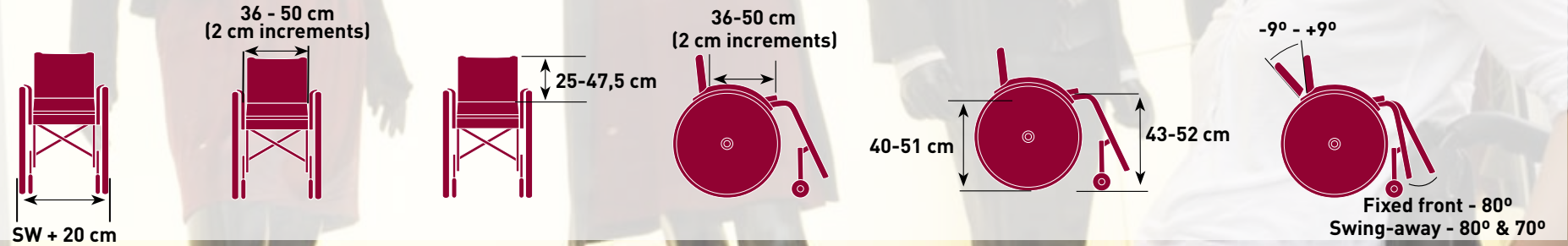
Divided composite footrest
With angle adjustment



LIVE WITHOUT LIMITS



For further information on the full specification and options and accessories please refer to the order form. All information is subject to change without notification. Please consult Sunrise Medical with any queries you may have. If you are visually impaired, this document can be viewed in PDF format at www.SunriseMedical.com or alternatively is available on request in large text.



Technical data sheet	
6 frame colours	Total weight fixed front: From 12.1 kg
1 sling colour	Total weight swing-away: From 12.6 kg
Hub & rim in 6 colours	Maximum user weight: 125 kg
Fork & axle plate in 3 anodized colours	

Sunrise Medical Limited
 High Street, Wollaston, Stourbridge, West Midlands DY8 4PS
 Tel.: +44 (0) 1384 44 66 66 | Fax: +44 (0) 1384 44 66 99
www.quickiewheelchairs.eu

