



Elevator  
**Easy**

**Move**

Comfortable, silent, elegant

**VIMEC**  
Easy moving

## EASY MOVE

**VIMEC**  
*Easy moving*

- Only occupies the space strictly necessary to ensure the user's comfort and safety
- Various personalisation options
- Suitable for both indoor and outdoor installation
- Quick to install with no major building work required
- Reliable, and with a capacity of no less than 400 kg
- On-board telephone and infrared barriers on three sides walls ensuring a safe ride
- Vimec quality guarantee



### Design

Vimec's focus on styling is expressed through the shapes and materials chosen to express wellbeing, attention to details, and a love of our work



MADE IN ITALY

■ **Easy Move** meets the needs of two different types of user: on the one hand, public and private facilities in search of ways of overcoming architectural barriers through an installation that fits perfectly into its context; on the other hand, wheelchair users who have chosen a vertical lift as the means of moving between floors in their homes.

■ **Versatile**

The **Easy Move** lift gives added value to its setting, through simple **tailor-made** installations, both indoors and out.

**Available from two to five floors**, it is an **ideal** system both for **renovation** projects and for new buildings: **no masonry work required**.

■ **Comfortable and safe**

Quiet and discreet, it can be used in complete **comfort** and **safety** thanks to the state-of-the-art technical features that safeguard users in operation, with protected, user-friendly controls.



**Experience**

Vimec is the market leader, and has been designing and building tailor-made installations to improve quality of life for all access needs, both in the home and in public buildings, since 1982.



■ **Customisable**

The **Easy Move** lift is tailor-made not only in its **functions** but also in its personalised combinations; the colours and trims available enable the **Easy Move** to fit perfectly into any context, whether a home or a public building.

# COLOURS CABIN WALLS

## COLOR SERIES



Grey  
(standard)



Beige  
(standard)



Blue  
(standard)



Rosso  
(standard)

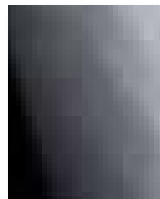


Ral speciali  
a richiesta

## VETRO SERIES



Trasparente



Grigio Fumè

## LEGNO SERIES



Acero  
(standard)



Ciliegio  
(standard)

## STEEL SERIES



Silver

## INOX SERIES



Lino lucido

# COLOURS CABIN PLATFORM

## GOMMA SERIES



Grigio a bolli  
(standard)



Grigio chiara



Grigio scuro



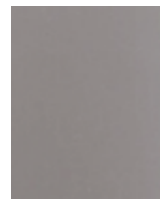
Rosso carminio

## SAFE STEP SERIES

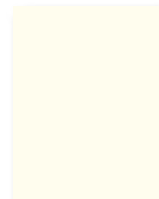
## LEGNO SERIES



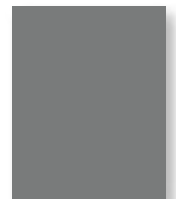
Pero selvaggio



VIMEC 7040  
(standard)



Ral 1013  
avorio chiaro



Ral 9023  
grigio scuro perlato

Easy Move offers you a hundred customisation options, starting from the walls of the cabin, available in different finishes and colours, through the platforms, in fine materials in a variety of shades. A wide choice of structure finishes are available to provide the best match with the surrounding colours and environment.

# ACCESSORIES

## Doors



Automatic telescopic doors

**Choosing** your Easy Move's materials, colours and special comforts will be a thrill experienced every time you enter the cabin.



Double hinged, in glass, for an elegant, stylish effect



Panoramic, in aluminium; lightness at hand



Panoramic hollow veneered



Hollow veneered with vision panel



# ACCESSORIES

## Control panels

- A) I-button, for electronic access floor controls
- B) Alarm pushbutton
- C) Load indicator



On-board control panel  
(standard)



Floor control panel

- A) LCD display with travel indicator
- B) Call button: green when lift is free, red when busy
- C) Loudspeaker
- D) I-button, for electronic access control

# ACCESSORIES

## Handrail



Internated handle

## Cabin lighting



LED bar (standard)



Starry sky

# Easy Move

## The right choice, the choice of taste

### ■ The domestic lift that increases your home's convenience and prestige.

The **Easy Move** is intended for everyone who gives **priority** to their own **wellbeing** and that of their family. **Comfortable and safe**, it **fits into any context**, guaranteeing your **home** a prestige installation that will **increase its value**.

### ■ Convenient, effortless

Quiet and discreet, it is absolutely **convenient** even for transporting the shopping, child buggies, and any other heavy or bulky item from one floor to another within the home. With the **Easy Move**, getting around the house **could not be easier**.

### ■ Customisable

You and your home deserve a lift which is tailored to suit you not only in its **functions** but also in its design and personalised finishes; the colours and trims available ensure your **Easy Move** is just as you want it, the perfect match for its context and your taste.

### ■ Reliable

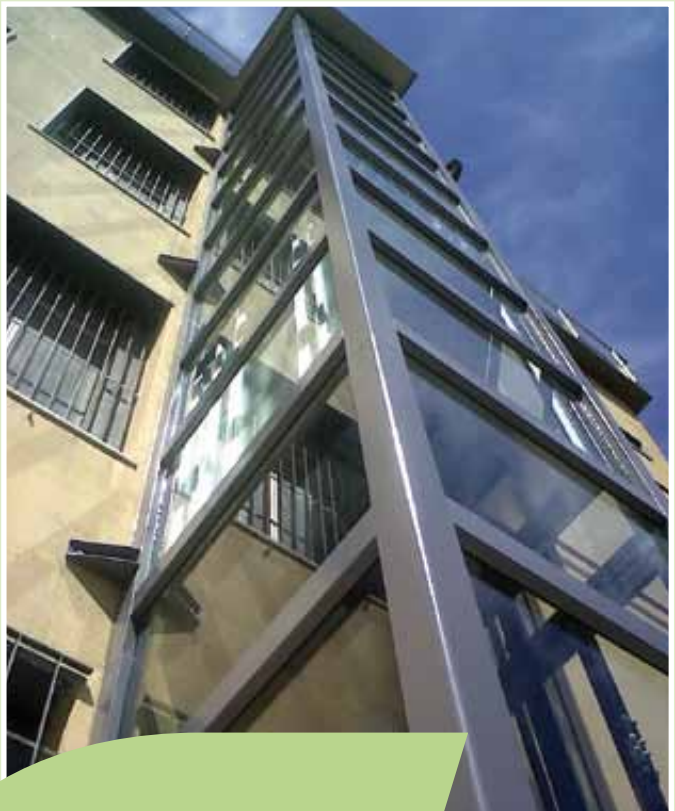
The Vimec technology guarantees you a product at the state of the art from every point of view. The manufacturer's **warranty** allows you to cut servicing costs and enjoy all the benefits of **quality** construction.



### Sensations

Getting onto a Vimec lift gives you a feeling of comfort and safety, and using it will become a natural part of your daily life.





## Easy Move with structure

The Easy Move lift has state of the art structures in terms of strength, versatility and design.

These structures can be customised with different types of glass panelling to suit installations of all kinds, with tailor-made versions and installations even in particularly difficult contexts.

## A Vimec outdoor lift

never requires invasive building works: installation is completed quickly and with great care, thanks to a network of skilled installers always up to date with the latest products and techniques.



# TECHNICAL DATA

Easy Move by Vimec is an extremely versatile hydraulic lift:

- **Customisable** to the needs of the user and the building.
- Ideal both for **renovation projects** (easy to install in existing shafts) and in **new installations**, since special building works such as an extra room to house machinery, or a pit underneath the lift, are not required.
- The pit required is truly negligible, since a recess just 12 cm deep is all that is needed.
- The lift runs on the standard voltage of 220/240 V and its power consumption is 1.8 kW
- **Certified to Machinery Directive EC 2006/42**
- The installation is **automatic** when there are **telescopic doors in the cabin**

## EASY MOVE

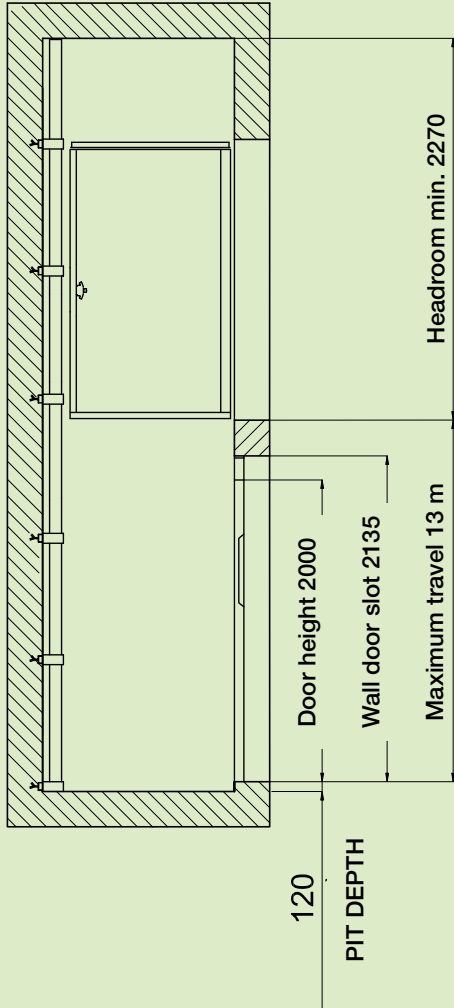
<b>Working load</b>	400 Kg
<b>Travel</b>	9,5 m
<b>Speed</b>	0,15 m/sec
<b>Pit</b>	120 mm for masonry shaft; 140 mm for structure
<b>Cabin "enclosed" with walls or infrared barriers</b>	
<b>"Simple Touch" calling to floor</b>	
<b>Arrival and departure with soft start/stop system</b>	
<b>Device for communication with outside of cabin</b>	
<b>Automatic safety levelling within</b>	+/- 20 mm
<b>Load-bearing roof</b>	
<b>Certified safety valve</b>	
<b>Electric locks with En 81-2 certification</b>	UNI EN 81-2
<b>Electrical system</b>	
<b>Power</b>	1.8 Kw
<b>Mains voltage</b>	230V-Mono
<b>Motor power supply voltage</b>	230V
<b>Auxiliary power supply voltage</b>	24V

## 8 standard configurations of platforms

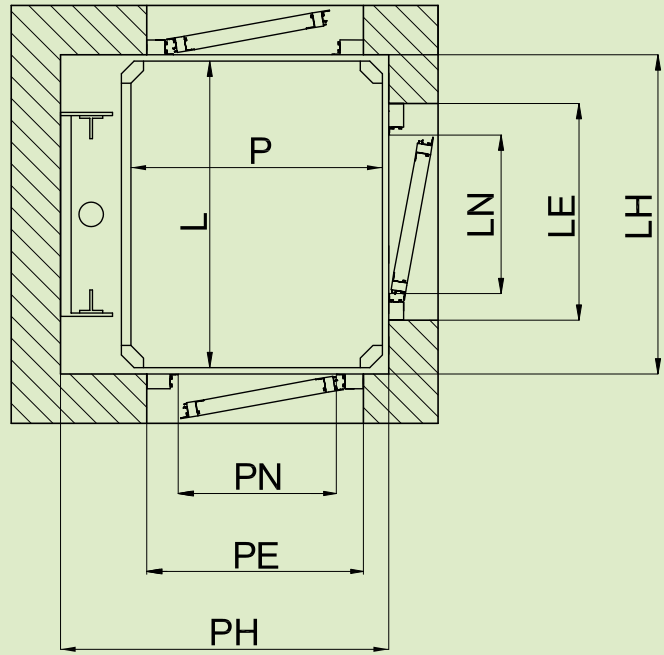
900x900    1000x1250    1250x1000    1250x1250  
1300x1030    1400x1000    1400x1100    1460x1170

Data are guideline and not binding. Vimec reserves the right to make any changes it considers appropriate.

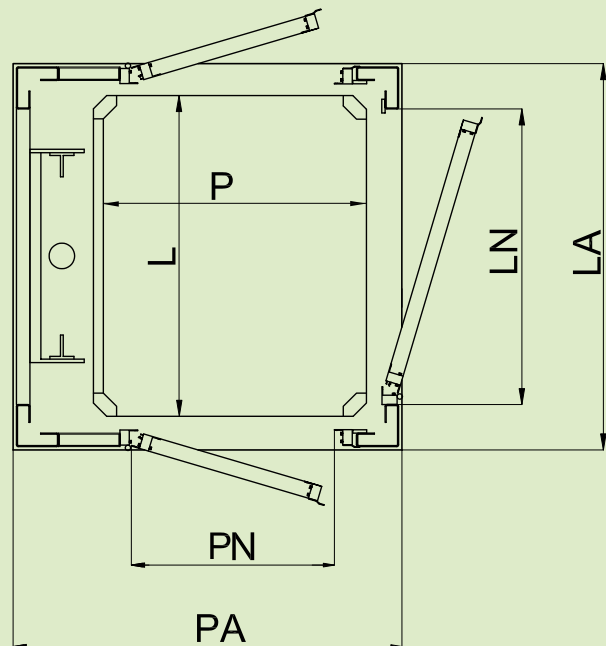
# DIMENSIONS AND OVERALL SPACE REQUIREMENTS



## MASONRY SHAFT



## STRUCTURE



**Key**

- L: Cabin width
- P: Cabin depth
- LH: Masonry shaft width
- PH: Masonry shaft depth
- LA: Free-standing structure width
- PA: Free-standing structure depth
- LN-PN: Door opening
- LE-PE: Door space occupancy

NB: add 45 mm for each additional cabin wall, and 100 mm in case of bellow door on board at cabin wall.

# MASONRY SHAFT

Cabin	L	900	1250	1400	770	850	1250
	P	850	1000	1100	950	1250	1250
Wall shaft	LH	930	1280	1430	800	880	1280
	PH	1090	1240	1340	1190	1490	1490

# STRUCTURE

Cabin	L	900	1250	1400	850	1250
	P	850	1000	1100	1250	1250
Wall shaft	LA	1045	1395	1545	995	1395
	PA	1195	1345	1445	1595	1595

## Heavy Duty: for higher load capacity

### E07 HD

When the installation requires a lift able to take loads of considerable size and weight, the E07 Heavy Duty allows the transportation of trolleys, beds and other objects which require extra space, without difficulty and while maintaining a stylish appearance.



### 10 standard configurations of platforms

1400x1300	1400x1400	1600x900	1600x1000	1800x900	1800x1000
2000x900	2000x1000	2200x900	2200x1100		

Rated load: 500 Kg to 600 Kg

Maximum travel: 8,5 m

Data are guideline and not binding. Vimec reserves the right to make any changes it considers appropriate.



**Vimec s.r.l.** - Via Parri, 7 - 42045 Luzzara - Reggio Emilia - Italy  
Tel. + 39 0522 970 666 Fax +39 0522 970918  
**www.vimec.biz** export@vimec.biz

**Vimec** abroad: Madrid (Spain), London (United Kingdom),  
Avignon (France), Warsaw (Poland)



**COMPANY  
WITH QUALITY SYSTEM  
CERTIFIED BY DNV  
= UNI EN ISO 9001/2008 =**



## Guaranteed product

The Vimec elevator is guaranteed for 24 months from the date of consignment

## PSP: at partners' service

Partner Support Program: a Vimec exclusive for its partners, aiming to supply each of them, all over the world, with a series of personalised tools for developing their business and offering the end user a better and better service. This programme includes an introduction to the concepts of "accessibility", specific classroom training courses and training in the field for sales staff and engineers, analysis and assistance for the development of the most appropriate market strategies, and backup for the organisation of seminars (e.g. for architects, civil engineering firms, etc.) and for participation at trade fairs. Close co-operation with its partners guarantees Vimec constant improvement of its degree of knowledge of the various markets and thus of their varying needs in terms of accessibility, which translates into the design of suitable products. All oriented towards better management of customer relations, and the achievement of full customer satisfaction.